



**MINISTERIO PARA LA TRANSICIÓN ECOLÓGICA Y EL RETO DEMOGRÁFICO**

SECRETARÍA DE ESTADO DE MEDIO AMBIENTE

**Dirección General del Agua**

**PROPUESTA DE PROYECTO DE PLAN  
HIDROLÓGICO DE LA DEMARCACIÓN  
HIDROGRÁFICA DEL SEGURA  
(REVISIÓN PARA EL TERCER CICLO: 2022-2027)**

**ANEXO I DEL ANEJO II  
SERIES DE APORTACIONES**

**Junio de 2021**



## ÍNDICE

<u>1. INTRODUCCIÓN .....</u>	<u>5</u>
<u>2. SERIES DE APORTACIONES HORIZONTE 2021 .....</u>	<u>7</u>
<u>3. SERIES DE APORTACIONES HORIZONTE 2027 .....</u>	<u>14</u>
<u>4. SERIES DE APORTACIONES HORIZONTE 2039 .....</u>	<u>21</u>
<u>5. SERIES DE APORTACIONES ACUEDUCTO TAJO SEGURA.....</u>	<u>28</u>

## ÍNDICE DE TABLAS

Tabla 1. Tabla de los puntos de medida y control para la calibración del modelo en la DHCS. ....	5
Tabla 2. Series de aportaciones horizonte 2021. ....	13
Tabla 3. Series de aportaciones horizonte 2027. ....	20
Tabla 4. Series de aportaciones horizonte 2039. ....	27
Tabla 5. Series de aportaciones ATS. ....	29

## ÍNDICE DE FIGURAS

Figura 1. Mapa con la selección de puntos de control para la calibración del modelo .....	6
---	---



## 1. INTRODUCCIÓN

El presente anexo muestra la información de los puntos característicos de muestreo de los datos de aforo de caudales y medición de volúmenes de las principales variables para la configuración de las series utilizadas en el modelo de la demarcación a partir del modelo SIMPA, así como los valores obtenidos para el trasvase ATS aplicando las vigentes reglas de explotación del acueducto.

Codigo	Descripción	Río	UTM X	UTM Y
			ETRS89	ETRS89
EA-102	Taibilla	Río Taibilla	563485	4231698
EA-011	La Esperanza	Río Moratalla	611635	4235159
EA-014	Argos	Río Argos	615214	4233402
EA-007	Alfonso XIII	Río Quípar tras embalse de Alfonso XIII	622622	4231821
EA-019	La Cierva	Río Mula	632689	4213532
EA-020	Baños de Mula	Río Mula	638195	4211405
EA-022	E. de Valdeinfierno	Río Luchena tras embalse de Valdeinfierno	591185	4184600
EA-033	E. de Puentes	Río Guadalentín tras embalse de Puentes	604169	4176992
EA-025	Paso de Los Carros	Río Guadalentín	656301	4200044
EA-003	E. de Talave	Río Mundo tras embalse de Talave	599392	4262595
EA-024	E. de Camarillas	Río Mundo tras embalse de Camarillas	617703	4243956
EA-001	E. de la Fuensanta	Río Segura	569189	4249593
EA-013	E. del Cenajo	Río Segura	607492	4247301
EA-006	Almadenes	Río Segura	626308	4233274
EA-016	Cieza	Río Segura	637284	4233291
EA-067	El Menjú	Río Segura	638989	4231283
EA-017	Abarán	Río Segura	641189	4229292
EA-018	Archena	Río Segura	648769	4221388
EA-063	Contraparada	Río Segura	656789	4208382
EA-064	Beniel	Río Segura	674959	4213092
EA-030	Guardamar	Río Segura	706680	4221034

Tabla 1. Tabla de los puntos de medida y control para la calibración del modelo en la DHCS.

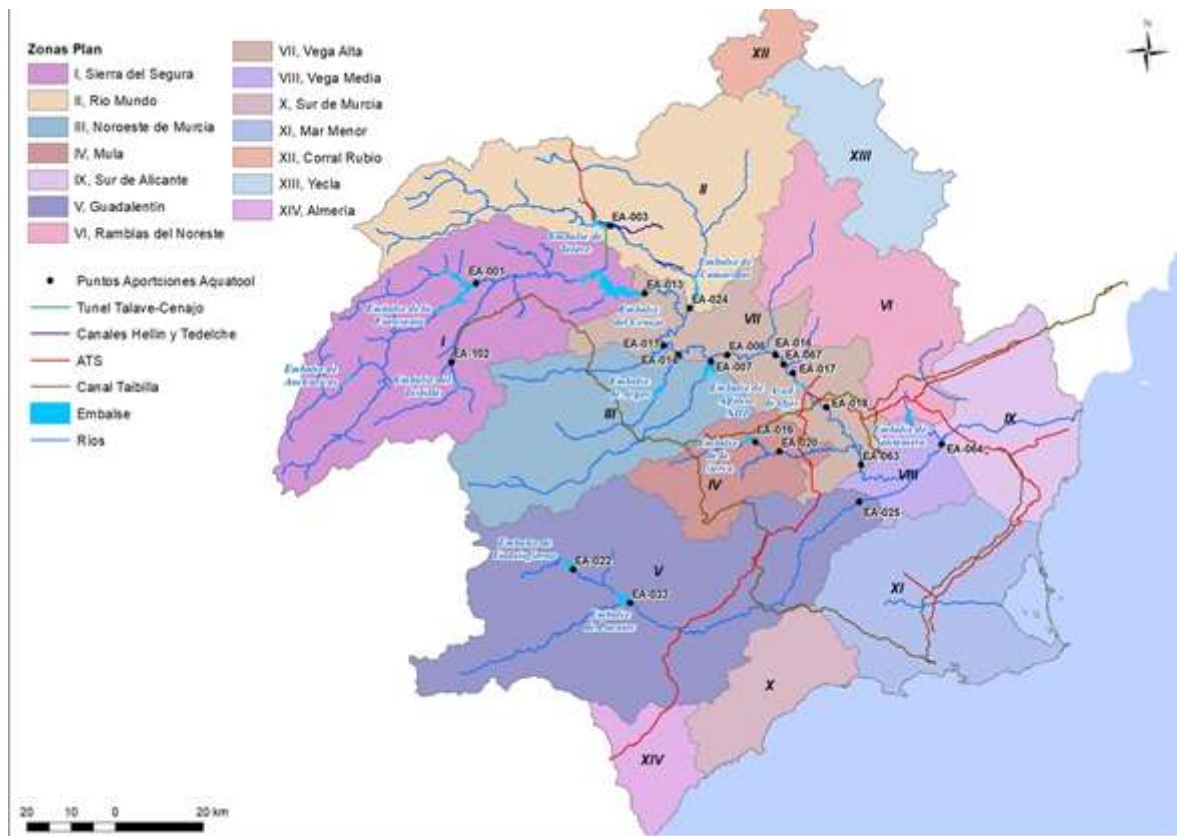


Figura 1. Mapa con la selección de puntos de control para la calibración del modelo

## 2. SERIES DE APORTACIONES HORIZONTE 2021

Fecha	Taibilla	La Esperanza	Argos	Alfonso XIII	La Cierva	Baños de Mula	Valdeinfierno (aguas abajo)
1940/41	68.2	14.9	28.7	22.2	4.3	11.0	2.9
1941/42	45.4	10.3	25.5	18.7	3.7	11.8	2.7
1942/43	28.1	8.1	13.0	12.9	3.4	9.3	4.7
1943/44	38.3	24.6	32.6	43.2	22.8	48.9	20.7
1944/45	28.9	16.5	23.8	22.2	7.5	20.2	4.0
1945/46	60.3	45.8	60.3	65.7	18.4	59.6	21.4
1946/47	88.6	42.6	56.6	69.3	13.2	29.0	20.9
1947/48	82.9	24.0	46.0	74.8	8.8	18.6	33.3
1948/49	72.7	54.7	109.1	151.5	41.6	76.1	46.4
1949/50	37.4	16.7	28.1	29.5	12.1	24.9	8.7
1950/51	49.8	23.9	36.4	47.9	16.5	51.0	22.2
1951/52	61.1	19.2	32.8	32.1	8.0	23.1	27.9
1952/53	37.3	13.0	16.6	14.5	2.6	7.7	3.3
1953/54	46.5	28.3	65.0	62.0	14.2	37.1	13.4
1954/55	47.6	9.7	15.7	15.4	3.9	11.0	8.0
1955/56	48.4	14.8	24.2	20.4	5.6	13.2	4.7
1956/57	35.3	14.5	22.5	21.1	9.5	17.9	5.9
1957/58	49.1	19.0	32.4	26.7	6.3	17.2	7.1
1958/59	64.1	35.1	82.7	68.0	11.9	28.4	23.5
1959/60	85.4	18.2	43.1	32.5	3.4	10.0	6.3
1960/61	64.3	10.7	18.5	15.3	2.3	6.6	4.0
1961/62	57.6	23.3	94.4	72.5	7.0	23.7	20.9
1962/63	86.0	28.7	58.7	44.4	5.1	12.8	7.8
1963/64	67.2	17.8	95.4	63.6	3.3	8.0	6.4
1964/65	49.7	19.7	50.4	55.7	8.8	20.5	12.1
1965/66	64.3	16.6	20.9	17.7	3.5	8.6	3.4
1966/67	41.7	16.1	17.7	20.1	4.2	11.8	9.9
1967/68	28.9	12.3	17.4	19.1	5.2	14.9	7.0
1968/69	85.0	33.3	29.8	31.3	3.5	9.5	16.6
1969/70	76.3	26.7	35.5	45.6	9.9	27.3	32.9
1970/71	64.4	18.9	20.3	19.3	2.6	6.4	8.1
1971/72	78.2	28.2	35.7	35.5	6.3	13.7	14.9
1972/73	67.7	39.3	50.6	55.3	9.8	23.0	21.1
1973/74	57.0	26.1	32.8	41.6	9.8	22.0	33.2
1974/75	51.3	24.6	29.3	28.4	5.1	13.1	10.7

Fecha	Taibilla	La Esperanza	Argos	Alfonso XIII	La Cierva	Baños de Mula	Valdeinfierno (aguas abajo)
1975/76	39.1	21.9	25.6	29.8	8.4	17.3	12.1
1976/77	74.1	22.8	23.7	20.2	2.9	7.2	7.2
1977/78	73.5	16.7	17.6	15.5	2.8	6.7	4.3
1978/79	72.9	12.0	13.8	12.7	1.7	4.1	7.2
1979/80	61.4	26.7	26.4	26.6	4.9	10.4	12.2
1980/81	31.7	10.3	12.4	10.5	1.7	4.6	2.8
1981/82	43.7	15.7	19.4	16.3	1.5	3.6	5.9
1982/83	31.4	12.1	13.3	13.0	2.3	6.1	5.7
1983/84	47.8	9.7	14.8	13.5	1.7	4.4	6.1
1984/85	60.3	13.1	16.3	15.4	2.3	4.8	6.1
1985/86	62.5	13.3	16.7	14.8	2.2	5.4	8.1
1986/87	49.0	25.9	29.4	35.0	9.3	23.8	15.7
1987/88	59.9	43.5	35.9	36.3	7.0	15.8	4.4
1988/89	63.9	54.3	56.2	68.2	10.8	24.2	24.2
1989/90	76.6	66.3	86.4	100.8	15.6	28.6	40.6
1990/91	50.0	21.1	24.7	19.9	3.9	10.4	7.1
1991/92	42.2	28.7	28.8	26.6	5.3	10.8	11.2
1992/93	36.8	20.2	25.7	22.5	4.0	9.3	8.5
1993/94	21.8	6.8	9.6	8.4	1.4	3.9	2.3
1994/95	16.0	8.6	11.7	10.5	2.2	5.2	4.5
1995/96	57.6	17.1	19.0	16.5	2.2	5.1	3.7
1996/97	77.3	31.4	46.7	49.1	5.4	11.8	22.4
1997/98	74.5	22.5	34.5	30.6	4.4	9.5	9.8
1998/99	39.7	12.5	18.1	16.2	3.0	7.8	4.7
1999/00	39.3	14.7	18.0	15.0	2.1	5.0	5.4
2000/01	62.7	16.6	26.4	32.6	7.9	16.2	8.8
2001/02	46.3	21.1	32.0	42.3	11.6	36.9	22.9
2002/03	43.6	9.2	14.7	12.5	2.2	6.5	3.9
2003/04	64.5	33.9	40.6	50.9	14.6	54.3	29.0
2004/05	37.2	16.3	19.5	15.5	3.2	10.4	4.2
2005/06	35.6	12.0	15.0	14.8	3.7	9.7	7.8
2006/07	39.2	29.2	28.8	30.4	8.7	21.5	25.1
2007/08	27.8	13.7	14.0	12.6	3.0	7.8	5.8
2008/09	65.0	45.8	46.0	45.7	9.8	21.2	17.3
2009/10	86.6	64.7	69.1	80.6	12.6	29.9	38.7
2010/11	77.7	23.1	28.7	27.7	4.6	14.0	9.2
2011/12	34.6	12.2	13.1	15.0	2.1	6.3	7.4
2012/13	87.5	20.7	16.7	14.9	3.8	10.1	7.0



Fecha	Taibilla	La Esperanza	Argos	Alfonso XIII	La Cierva	Baños de Mula	Valdeinfierno (aguas abajo)
2013/14	52.1	15.8	12.8	8.7	0.3	1.3	3.7
2014/15	63.2	16.4	12.4	9.6	2.1	6.5	4.8
2015/16	42.1	12.4	10.0	6.8	0.6	2.6	3.3
2016/17	62.5	28.4	25.0	46.4	22.8	80.6	25.7
2017/18	51.5	16.7	14.0	12.0	1.1	5.8	5.0
MEDIA ANUAL	55.1	22.5	31.9	32.6	6.8	17.1	12.4
MÁXIMO	88.6	66.3	109.1	151.5	41.6	80.6	46.4
MÍNIMO	16.0	6.8	9.6	6.8	0.3	1.3	2.3
Fecha	Puentes (aguas abajo)	Los Carros	Talave (aguas abajo)	Camarillas (desagüe total)	Fuensanta (aguas abajo)	Cenajo (aguas abajo)	Almadenes
1940/41	11.9	34.6	143.7	205.1	353.6	526.7	809.4
1941/42	11.7	37.6	76.2	120.5	197.4	302.4	485.1
1942/43	16.8	38.1	48.2	81.2	123.8	189.6	311.7
1943/44	114.3	209.7	59.7	96.1	157.0	256.2	467.7
1944/45	20.2	79.9	53.0	86.5	113.8	191.8	351.1
1945/46	89.1	193.3	127.6	183.7	279.8	435.9	818.6
1946/47	74.7	128.2	180.7	258.7	419.5	644.1	1097.4
1947/48	137.1	182.8	145.2	214.4	360.3	554.9	929.5
1948/49	218.8	349.4	107.6	174.5	213.5	404.1	926.3
1949/50	34.1	81.7	58.9	101.0	122.5	210.3	396.2
1950/51	79.2	154.0	120.2	176.0	276.9	409.9	710.3
1951/52	104.0	158.8	114.7	175.7	242.3	389.4	662.1
1952/53	11.4	30.3	54.2	93.3	126.2	214.8	361.3
1953/54	50.6	125.0	64.5	102.8	194.9	303.7	577.4
1954/55	23.7	52.4	71.8	106.8	224.3	325.9	480.3
1955/56	17.6	56.5	77.4	113.4	232.7	343.4	525.7
1956/57	20.8	50.3	56.9	92.2	166.6	254.2	414.2
1957/58	23.6	56.5	96.7	146.6	218.6	340.5	577.6
1958/59	60.5	115.0	128.6	200.7	242.7	419.6	827.9
1959/60	17.6	43.5	171.4	250.0	442.1	645.1	1002.4
1960/61	12.8	34.7	119.6	182.4	294.1	437.7	672.9
1961/62	46.6	86.5	125.0	188.8	258.9	410.7	804.0
1962/63	22.6	54.3	189.3	266.0	417.7	641.4	1058.8
1963/64	19.3	42.7	132.1	193.4	275.0	433.9	815.1
1964/65	34.1	72.0	84.5	132.5	174.6	290.9	562.3
1965/66	12.6	36.8	138.6	194.8	340.9	501.8	764.0

Fecha	Taibilla	La Esperanza	Argos	Alfonso XIII	La Cierva	Baños de Mula	Valdeinfierno (aguas abajo)
1966/67	28.8	66.6	66.2	111.5	150.8	254.4	431.2
1967/68	21.4	61.5	59.0	98.8	123.2	199.3	355.4
1968/69	52.7	77.5	168.9	234.9	430.3	635.5	985.6
1969/70	118.9	241.4	121.1	186.5	295.9	476.5	787.7
1970/71	25.1	50.8	102.7	155.9	287.3	438.6	665.1
1971/72	41.0	86.5	125.3	183.1	361.5	546.2	845.8
1972/73	64.7	126.3	115.5	186.0	240.8	423.9	780.2
1973/74	97.3	160.7	81.9	131.1	215.9	352.3	599.5
1974/75	30.2	77.9	80.3	128.9	197.3	326.3	553.3
1975/76	44.7	102.6	77.3	125.0	160.4	273.0	489.0
1976/77	18.9	44.1	142.4	204.8	373.1	558.6	845.0
1977/78	14.6	42.5	151.0	208.4	433.3	611.3	881.4
1978/79	20.6	38.0	131.7	182.9	366.9	532.8	763.4
1979/80	35.4	84.7	117.8	173.1	284.6	448.4	718.4
1980/81	9.0	28.3	54.3	93.0	118.2	198.3	332.2
1981/82	16.8	32.9	66.4	102.9	166.7	273.2	437.1
1982/83	15.4	38.9	60.1	103.9	142.8	227.3	378.6
1983/84	20.7	44.2	81.8	121.0	243.1	351.4	517.6
1984/85	19.8	37.6	90.8	134.4	289.9	426.8	615.1
1985/86	21.4	48.5	88.9	128.8	312.1	450.8	633.6
1986/87	50.3	106.1	65.9	119.2	172.3	298.0	526.5
1987/88	16.3	49.4	120.6	183.6	271.8	446.2	771.7
1988/89	75.6	153.8	122.5	189.7	223.8	406.9	811.9
1989/90	114.7	208.6	142.9	214.2	244.5	459.4	965.5
1990/91	23.4	75.8	109.9	168.2	215.2	350.1	597.6
1991/92	34.1	74.6	76.8	119.1	183.6	303.6	524.1
1992/93	26.4	73.2	57.3	92.3	136.1	231.6	403.9
1993/94	7.4	23.1	37.1	63.0	102.2	154.1	247.1
1994/95	14.7	35.5	29.3	53.2	70.1	115.1	205.2
1995/96	13.2	30.8	91.6	132.7	274.1	416.8	613.5
1996/97	56.3	99.2	111.6	168.7	294.6	484.8	799.7
1997/98	27.3	53.9	110.5	166.7	311.5	491.0	760.3
1998/99	14.4	39.0	52.3	89.2	131.4	225.6	370.1
1999/00	14.9	29.8	58.1	89.4	169.4	265.4	411.9
2000/01	32.0	74.5	86.8	121.8	316.9	454.1	662.3
2001/02	64.7	114.3	66.8	106.5	167.7	285.8	501.1
2002/03	13.1	33.3	84.7	123.1	258.6	362.3	529.1
2003/04	75.9	139.6	140.0	200.2	309.7	491.5	837.4

Fecha	Taibilla	La Esperanza	Argos	Alfonso XIII	La Cierva	Baños de Mula	Valdeinfierno (aguas abajo)
2004/05	13.8	34.7	66.3	115.0	96.1	198.2	375.5
2005/06	24.0	53.3	57.7	90.3	174.1	254.0	393.5
2006/07	61.4	105.9	79.2	117.5	177.4	291.5	517.3
2007/08	19.5	41.1	56.3	90.5	118.5	193.7	335.2
2008/09	46.5	88.9	148.2	204.0	380.9	572.9	945.4
2009/10	107.4	166.2	163.6	232.3	401.2	630.5	1120.5
2010/11	23.8	51.4	130.3	183.7	352.0	535.3	813.6
2011/12	26.8	51.5	55.7	88.6	146.9	228.6	366.7
2012/13	29.4	56.2	255.1	311.7	692.2	934.2	1316.0
2013/14	14.1	24.8	97.3	122.7	326.2	454.0	622.0
2014/15	20.7	38.8	95.1	126.2	308.3	457.5	632.6
2015/16	13.0	22.1	57.7	78.3	209.1	309.3	423.2
2016/17	102.3	241.1	104.0	155.6	211.0	386.9	663.3
2017/18	18.4	41.0	134.8	168.7	355.2	486.2	707.1
MEDIA ANUAL	41.0	82.4	99.9	148.9	249.6	387.9	638.4
MÁXIMO	218.8	349.4	255.1	311.7	692.2	934.2	1316.0
MÍNIMO	7.4	22.1	29.3	53.2	70.1	115.1	205.2
Fecha	Cieza	El Menjú	Abarán	Archena	Contraparada	Beniel	Guardamar
1940/41	833.0	833.5	842.5	845.2	869.2	909.5	928.1
1941/42	507.5	507.9	516.1	518.0	542.6	588.2	606.7
1942/43	333.1	333.6	341.8	344.6	367.6	411.7	433.0
1943/44	494.2	494.6	504.2	507.5	583.5	814.5	841.6
1944/45	368.6	368.9	374.9	377.7	418.5	508.8	526.2
1945/46	860.6	861.3	874.2	880.4	978.6	1188.5	1222.6
1946/47	1133.2	1133.9	1149.0	1155.2	1214.9	1361.6	1406.1
1947/48	954.4	954.8	963.4	965.9	1002.3	1195.4	1216.2
1948/49	973.2	974.0	989.4	994.9	1120.3	1531.5	1620.9
1949/50	420.0	420.4	428.8	431.8	478.6	574.0	604.7
1950/51	749.1	750.3	771.4	781.3	877.5	1045.1	1082.4
1951/52	691.2	691.9	705.2	709.4	760.1	931.3	959.8
1952/53	380.9	381.3	389.1	391.3	411.6	447.1	465.6
1953/54	604.3	604.9	617.1	622.9	688.1	826.0	845.7
1954/55	497.4	497.6	502.7	504.3	530.3	590.8	608.2
1955/56	543.7	544.0	548.9	550.4	577.0	646.4	663.6
1956/57	436.1	436.5	442.9	444.8	476.3	536.5	555.0

Fecha	Taibilla	La Esperanza	Argos	Alfonso XIII	La Cierva	Baños de Mula	Valdeinfierno (aguas abajo)
1957/58	605.5	606.2	619.8	623.5	660.6	723.7	744.3
1958/59	878.7	879.6	899.6	908.0	965.4	1098.1	1127.4
1959/60	1037.8	1038.3	1055.2	1058.3	1086.7	1138.1	1161.1
1960/61	698.3	698.7	706.0	707.5	724.3	763.8	778.6
1961/62	828.8	829.2	836.1	838.8	879.3	970.6	985.2
1962/63	1083.0	1083.3	1090.7	1093.1	1120.9	1180.1	1195.8
1963/64	836.5	836.7	842.6	844.1	861.8	908.3	920.8
1964/65	590.6	591.1	602.7	606.9	678.4	757.3	776.2
1965/66	785.6	786.0	792.9	794.7	815.8	859.2	881.4
1966/67	458.8	459.4	469.7	472.7	499.8	575.4	598.1
1967/68	382.6	382.9	391.6	394.7	426.1	500.7	523.9
1968/69	1011.6	1012.0	1019.1	1021.3	1043.3	1125.5	1140.5
1969/70	819.6	820.2	833.1	839.2	893.8	1150.4	1176.6
1970/71	688.3	688.7	696.2	698.0	715.7	771.9	790.3
1971/72	875.0	875.8	889.0	893.1	925.2	1021.8	1050.6
1972/73	820.5	821.6	842.2	850.2	907.7	1062.6	1121.2
1973/74	626.4	627.1	636.4	639.8	680.3	851.9	874.1
1974/75	584.0	584.8	596.3	601.0	633.2	723.9	749.7
1975/76	514.8	515.4	525.2	528.9	562.0	673.9	691.3
1976/77	870.5	871.0	879.9	882.3	901.4	951.8	969.9
1977/78	902.1	902.4	908.7	910.6	927.0	976.0	991.6
1978/79	782.0	782.2	787.4	788.7	799.0	840.6	853.0
1979/80	746.1	746.7	758.4	763.5	789.8	889.6	922.3
1980/81	350.6	350.9	356.9	358.3	370.5	404.5	423.2
1981/82	452.8	453.0	457.7	458.7	467.4	503.9	516.6
1982/83	406.1	406.5	416.1	418.2	434.5	478.5	497.1
1983/84	535.8	536.0	541.0	542.1	553.3	601.9	615.2
1984/85	636.8	637.1	643.0	644.4	656.5	699.4	714.8
1985/86	652.9	653.2	658.7	660.1	673.2	727.2	740.6
1986/87	561.1	562.0	575.4	581.0	632.7	754.9	780.9
1987/88	819.6	820.5	841.0	847.4	891.2	959.0	1039.5
1988/89	872.0	874.4	906.5	919.5	975.6	1146.4	1207.1
1989/90	1007.1	1007.8	1025.3	1030.0	1082.1	1305.0	1348.5
1990/91	622.2	622.6	629.3	631.5	657.4	749.8	775.6
1991/92	546.6	547.0	555.4	557.6	581.4	664.4	687.8
1992/93	426.7	427.1	434.6	436.8	457.6	539.7	561.0
1993/94	264.3	264.5	269.2	270.2	280.7	307.7	319.4
1994/95	222.3	222.6	227.9	229.3	241.4	280.8	292.7

Fecha	Taibilla	La Esperanza	Argos	Alfonso XIII	La Cierva	Baños de Mula	Valdeinfierno (aguas abajo)
1995/96	631.5	631.7	636.7	637.8	650.0	685.1	699.4
1996/97	831.5	832.0	841.0	843.7	869.5	976.6	998.5
1997/98	783.1	783.4	789.9	791.5	812.3	871.5	887.7
1998/99	387.9	388.3	395.4	398.1	417.8	462.5	476.5
1999/00	427.2	427.5	431.8	432.8	444.7	477.9	488.1
2000/01	683.1	683.5	692.2	695.2	729.0	817.4	840.8
2001/02	530.0	530.5	541.8	547.1	613.1	740.8	766.2
2002/03	547.7	547.9	553.4	554.9	573.6	611.8	625.9
2003/04	868.2	868.7	880.9	888.0	982.0	1133.0	1159.0
2004/05	394.2	394.5	400.2	402.3	430.3	472.0	488.8
2005/06	411.6	411.8	417.4	419.6	442.1	501.9	518.3
2006/07	541.3	541.7	553.2	557.3	599.0	712.9	728.4
2007/08	364.9	365.4	376.9	379.6	400.7	449.1	465.3
2008/09	969.7	970.3	981.5	985.8	1026.1	1124.4	1142.4
2009/10	1165.7	1166.8	1189.5	1196.2	1256.6	1437.1	1462.4
2010/11	826.1	826.5	834.8	838.0	869.1	926.4	933.6
2011/12	385.5	386.0	395.1	398.3	417.1	475.8	488.8
2012/13	1326.6	1326.8	1334.4	1336.5	1355.3	1415.8	1442.1
2013/14	624.8	624.9	626.9	627.2	631.4	658.1	667.9
2014/15	640.6	640.7	646.2	647.6	660.9	702.9	722.3
2015/16	426.3	426.4	429.0	429.4	436.0	459.7	469.9
2016/17	689.9	690.6	715.6	724.3	855.9	1126.7	1232.6
2017/18	713.8	714.0	719.4	720.9	736.6	781.3	805.6
MEDIA ANUAL	663.5	664.0	673.9	677.2	712.3	804.7	828.7
MÁXIMO	1326.6	1326.8	1334.4	1336.5	1355.3	1531.5	1620.9
MÍNIMO	222.3	222.6	227.9	229.3	241.4	280.8	292.7

Tabla 2. Series de aportaciones horizonte 2021.

### 3. SERIES DE APORTACIONES HORIZONTE 2027

Fecha	Taibilla	La Esperanza	Argos	Alfonso XIII	La Cierva	Baños de Mula	Valdeinfierno (aguas abajo)
1940/41	64.7	14.0	26.8	20.6	3.9	9.9	2.7
1941/42	43.1	9.7	23.8	17.4	3.3	10.7	2.5
1942/43	26.7	7.7	12.2	12.1	3.2	8.5	4.6
1943/44	36.4	23.2	30.6	40.6	21.2	45.3	20.6
1944/45	27.4	15.6	22.3	20.9	7.1	18.9	3.9
1945/46	57.3	43.0	56.2	60.8	16.4	53.3	19.5
1946/47	84.1	40.1	53.0	64.8	12.2	26.6	19.6
1947/48	78.7	22.5	42.9	69.2	7.9	16.7	30.2
1948/49	69.0	51.5	102.1	141.0	37.8	68.6	43.4
1949/50	35.5	15.7	26.4	27.6	10.9	22.4	8.1
1950/51	47.3	22.5	34.0	44.4	14.9	46.0	20.7
1951/52	58.0	18.1	30.7	30.1	7.4	21.1	26.0
1952/53	35.4	12.2	15.5	13.5	2.3	7.0	3.1
1953/54	44.1	26.7	61.1	58.3	13.3	34.1	12.9
1954/55	45.2	9.1	14.8	14.4	3.7	10.2	7.7
1955/56	45.9	13.9	22.7	19.0	5.1	12.0	4.4
1956/57	33.5	13.7	21.0	19.6	8.5	16.0	5.4
1957/58	46.6	18.0	30.4	25.1	5.8	15.8	7.0
1958/59	60.9	33.0	77.2	63.0	10.8	25.6	21.5
1959/60	81.1	17.1	40.4	30.3	3.2	9.1	5.9
1960/61	61.0	10.1	17.3	14.4	2.1	6.1	3.8
1961/62	54.7	21.9	88.3	67.4	6.4	21.5	19.4
1962/63	81.7	27.0	54.9	41.4	4.7	11.8	7.3
1963/64	63.8	16.8	89.2	59.1	3.0	7.3	6.0
1964/65	47.2	18.6	47.2	52.6	8.1	18.9	11.8
1965/66	61.1	15.7	19.6	16.6	3.3	7.9	3.2
1966/67	39.5	15.2	16.5	18.8	3.9	10.7	9.0
1967/68	27.4	11.6	16.3	17.8	4.7	13.6	6.5
1968/69	80.7	31.2	27.8	29.0	3.2	8.6	15.2
1969/70	72.4	25.2	33.4	43.1	9.6	25.8	32.5
1970/71	61.1	17.7	18.9	17.9	2.4	5.8	7.4
1971/72	74.3	26.6	33.4	33.2	6.0	12.7	14.3
1972/73	64.3	37.1	47.5	52.1	9.3	21.4	20.9
1973/74	54.1	24.6	30.7	39.1	9.2	20.5	33.5
1974/75	48.7	23.2	27.5	26.6	4.7	12.1	10.1

Fecha	Taibilla	La Esperanza	Argos	Alfonso XIII	La Cierva	Baños de Mula	Valdeinfierno (aguas abajo)
1975/76	37.1	20.6	23.9	27.7	7.6	15.5	11.0
1976/77	70.3	21.4	22.2	18.8	2.6	6.6	6.6
1977/78	69.7	15.8	16.5	14.5	2.6	6.2	4.2
1978/79	69.2	11.3	12.9	11.8	1.5	3.7	6.6
1979/80	58.3	25.0	24.7	24.6	4.4	9.4	11.2
1980/81	30.1	9.7	11.6	9.8	1.6	4.2	2.7
1981/82	41.6	14.7	18.1	15.2	1.4	3.3	5.4
1982/83	29.8	11.5	12.5	12.2	2.2	5.7	5.7
1983/84	45.4	9.1	13.8	12.6	1.6	4.0	5.7
1984/85	57.3	12.3	15.3	14.3	2.0	4.4	5.6
1985/86	59.3	12.5	15.6	13.8	2.0	5.0	7.7
1986/87	46.5	24.6	27.7	33.3	9.2	22.8	15.9
1987/88	56.9	40.9	33.6	34.2	6.7	14.8	4.2
1988/89	60.7	51.0	52.5	63.4	9.9	21.9	22.3
1989/90	72.8	62.5	81.0	94.6	14.6	26.4	39.6
1990/91	47.5	19.8	23.2	18.6	3.6	9.4	6.7
1991/92	40.1	26.9	26.8	24.7	4.8	9.8	10.2
1992/93	34.9	18.9	24.0	20.9	3.6	8.4	7.8
1993/94	20.7	6.4	9.0	7.9	1.3	3.5	2.1
1994/95	15.2	8.2	11.0	9.8	2.1	4.9	4.5
1995/96	54.8	16.1	17.7	15.3	2.0	4.6	3.4
1996/97	73.4	29.5	43.6	45.5	4.9	10.7	20.4
1997/98	70.7	21.2	32.4	28.8	4.2	8.8	9.5
1998/99	37.7	11.8	17.0	15.1	2.7	7.1	4.3
1999/00	37.3	13.9	16.9	14.1	1.9	4.6	5.2
2000/01	59.6	15.6	24.8	30.8	7.7	15.3	8.7
2001/02	43.9	19.8	29.9	39.5	10.7	33.8	21.7
2002/03	41.4	8.7	13.7	11.7	2.0	6.0	3.7
2003/04	61.2	31.8	37.9	47.2	13.2	48.8	26.9
2004/05	35.3	15.4	18.3	14.5	2.9	9.5	4.0
2005/06	33.8	11.2	14.0	13.7	3.4	8.7	7.1
2006/07	39.2	29.2	28.8	30.4	8.7	21.5	25.1
2007/08	27.8	13.7	14.0	12.6	3.0	7.8	5.8
2008/09	65.0	45.8	46.0	45.7	9.8	21.2	17.3
2009/10	86.6	64.7	69.1	80.6	12.6	29.9	38.7
2010/11	77.7	23.1	28.7	27.7	4.6	14.0	9.2
2011/12	34.6	12.2	13.1	15.0	2.1	6.3	7.4
2012/13	87.5	20.7	16.7	14.9	3.8	10.1	7.0

Fecha	Taibilla	La Esperanza	Argos	Alfonso XIII	La Cierva	Baños de Mula	Valdeinfierno (aguas abajo)
2013/14	52.1	15.8	12.8	8.7	0.3	1.3	3.7
2014/15	63.2	16.4	12.4	9.6	2.1	6.5	4.8
2015/16	42.1	12.4	10.0	6.8	0.6	2.6	3.3
2016/17	62.5	28.4	25.0	46.4	22.8	80.6	25.7
2017/18	51.5	16.7	14.0	12.0	1.1	5.8	5.0
MEDIA ANUAL	52.8	21.4	30.1	30.7	6.3	15.9	11.9
MÁXIMO	87.5	64.7	102.1	141.0	37.8	80.6	43.4
MÍNIMO	15.2	6.4	9.0	6.8	0.3	1.3	2.1
Fecha	Puentes (aguas abajo)	Los Carros	Talave (aguas abajo)	Camarillas (desagüe total)	Fuensanta (aguas abajo)	Cenajo (aguas abajo)	Almadenes
1940/41	11.0	31.7	136.9	194.9	337.8	502.8	771.5
1941/42	10.8	34.4	72.4	114.3	188.2	287.8	461.3
1942/43	15.8	34.7	45.8	77.1	117.9	180.4	296.4
1943/44	112.1	190.4	56.7	91.2	149.8	244.2	445.0
1944/45	19.3	72.6	50.4	82.1	108.3	182.5	333.8
1945/46	81.6	174.5	121.1	174.1	265.8	414.2	777.0
1946/47	69.6	116.6	171.7	245.5	400.0	613.6	1044.4
1947/48	125.2	164.9	138.1	203.4	343.4	528.6	884.1
1948/49	203.8	314.8	102.2	165.5	202.9	384.2	881.2
1949/50	31.8	74.9	55.9	95.8	116.4	199.8	376.4
1950/51	73.6	140.0	114.5	167.3	265.1	391.4	676.4
1951/52	96.1	143.6	108.8	166.4	229.5	369.4	628.2
1952/53	10.6	27.7	51.4	88.5	119.9	204.1	343.2
1953/54	48.4	113.3	61.3	97.5	186.3	289.5	548.8
1954/55	22.6	47.6	68.5	101.6	214.7	311.5	458.1
1955/56	16.4	51.2	73.6	107.7	221.4	326.8	500.2
1956/57	19.2	45.7	53.9	87.2	157.8	241.1	392.9
1957/58	22.6	51.4	91.9	139.1	207.9	323.7	548.8
1958/59	55.5	104.3	122.4	190.6	231.5	399.8	787.7
1959/60	16.3	39.8	163.0	237.3	421.0	614.2	953.3
1960/61	12.1	31.8	113.2	172.7	278.5	415.2	638.4
1961/62	43.1	78.3	118.9	179.3	246.6	390.9	765.6
1962/63	21.0	49.6	179.9	252.3	398.1	610.8	1007.5
1963/64	18.1	38.9	125.6	183.6	262.2	413.3	776.1
1964/65	32.7	65.3	80.3	125.8	166.4	277.0	534.8
1965/66	11.8	33.6	131.8	185.0	325.1	478.5	727.5



Fecha	Taibilla	La Esperanza	Argos	Alfonso XIII	La Cierva	Baños de Mula	Valdeinfierno (aguas abajo)
1966/67	26.6	60.8	62.9	105.7	143.5	241.8	409.5
1967/68	19.8	55.8	56.1	93.8	117.3	189.6	338.0
1968/69	48.3	70.2	160.8	223.2	410.8	606.3	939.2
1969/70	116.0	218.7	114.9	176.8	281.2	453.0	748.2
1970/71	23.0	46.5	97.4	147.7	273.4	417.2	631.9
1971/72	39.0	78.7	119.3	173.9	344.8	520.5	805.2
1972/73	62.6	114.6	109.7	176.4	228.8	402.9	741.1
1973/74	95.6	145.9	77.8	124.4	205.6	335.2	569.8
1974/75	28.3	70.8	76.2	122.2	187.4	309.9	525.1
1975/76	40.8	93.0	73.3	118.4	152.2	259.2	463.9
1976/77	17.5	40.1	135.5	194.5	355.5	532.2	804.5
1977/78	14.0	38.8	143.7	198.0	413.6	582.9	839.3
1978/79	18.9	34.6	125.7	174.0	351.3	509.2	728.6
1979/80	32.4	76.3	112.0	164.3	270.5	426.4	683.5
1980/81	8.3	25.8	51.5	88.1	111.9	188.0	315.0
1981/82	15.4	29.8	63.4	97.9	159.8	261.3	417.3
1982/83	14.8	35.5	57.0	98.4	135.1	215.4	358.9
1983/84	19.4	40.3	77.7	114.8	231.3	334.4	492.1
1984/85	18.2	34.2	86.5	127.7	277.0	407.2	586.2
1985/86	20.1	44.2	84.7	122.5	298.0	429.9	603.5
1986/87	49.6	96.4	62.7	113.1	164.3	283.7	500.2
1987/88	15.3	45.0	114.5	174.2	258.2	424.2	733.3
1988/89	69.3	142.0	116.4	180.0	213.1	387.3	772.8
1989/90	110.1	188.8	135.7	203.1	231.8	436.2	916.7
1990/91	21.6	68.3	104.5	159.6	204.9	333.3	568.5
1991/92	31.2	67.6	72.9	113.0	174.6	288.8	498.3
1992/93	24.3	66.0	54.4	87.5	129.3	220.2	384.0
1993/94	6.9	21.2	35.3	59.7	97.2	146.6	234.8
1994/95	14.2	32.4	27.8	50.4	66.5	109.3	194.7
1995/96	12.2	28.4	87.5	126.4	262.8	399.1	586.2
1996/97	51.2	93.5	106.0	160.1	279.8	460.9	760.1
1997/98	25.9	49.1	104.8	158.0	295.4	466.2	721.7
1998/99	13.3	35.6	49.7	84.6	124.9	214.5	351.9
1999/00	14.1	27.2	55.0	84.6	160.2	251.5	390.3
2000/01	31.2	67.8	82.7	115.7	302.0	432.6	630.2
2001/02	60.9	103.4	63.4	101.0	158.9	271.3	475.9
2002/03	12.2	30.3	80.6	116.9	246.9	345.6	504.0
2003/04	70.3	126.2	132.9	189.8	294.8	467.6	796.1

Fecha	Taibilla	La Esperanza	Argos	Alfonso XIII	La Cierva	Baños de Mula	Valdeinfierno (aguas abajo)
2004/05	12.8	31.7	62.9	109.0	91.2	188.3	356.6
2005/06	22.0	48.3	54.9	85.7	166.2	242.1	374.7
2006/07	61.4	105.9	79.2	117.5	177.4	291.5	517.3
2007/08	19.5	41.1	56.3	90.5	118.5	193.7	335.2
2008/09	46.5	88.9	148.2	204.0	380.9	572.9	945.4
2009/10	107.4	166.2	163.6	232.3	401.2	630.5	1120.5
2010/11	23.8	51.4	130.3	183.7	352.0	535.3	813.6
2011/12	26.8	51.5	55.7	88.6	146.9	228.6	366.7
2012/13	29.4	56.2	255.1	311.7	692.2	934.2	1316.0
2013/14	14.1	24.8	97.3	122.7	326.2	454.0	622.0
2014/15	20.7	38.8	95.1	126.2	308.3	457.5	632.6
2015/16	13.0	22.1	57.7	78.3	209.1	309.3	423.2
2016/17	102.3	241.1	104.0	155.6	211.0	386.9	663.3
2017/18	18.4	41.0	134.8	168.7	355.2	486.2	707.1
MEDIA ANUAL	38.9	76.0	95.9	142.6	239.9	372.7	612.5
MÁXIMO	203.8	314.8	255.1	311.7	692.2	934.2	1316.0
MÍNIMO	6.9	21.2	27.8	50.4	66.5	109.3	194.7
Fecha	Cieza	El Menjú	Abarán	Archena	Contraparada	Beniel	Guardamar
1940/41	793.1	793.5	802.1	804.6	825.9	864.1	881.8
1941/42	482.1	482.6	490.3	492.1	514.5	557.7	575.3
1942/43	316.4	316.9	324.7	327.3	348.5	390.3	410.5
1943/44	469.8	470.2	479.3	482.4	553.6	771.3	796.9
1944/45	350.2	350.5	356.2	358.8	396.8	482.1	498.6
1945/46	815.4	816.1	828.3	834.2	925.7	1124.0	1156.2
1946/47	1077.3	1078.0	1092.3	1098.1	1152.8	1291.9	1333.9
1947/48	906.6	907.0	915.2	917.5	950.5	1132.9	1152.7
1948/49	925.0	925.7	940.4	945.6	1063.4	1454.1	1539.1
1949/50	398.8	399.2	407.2	410.0	453.8	544.4	573.5
1950/51	712.3	713.3	733.4	742.6	832.2	990.3	1025.5
1951/52	655.2	655.8	668.4	672.4	719.2	880.8	907.7
1952/53	361.5	361.8	369.2	371.3	389.9	423.5	441.0
1953/54	573.6	574.2	585.7	591.2	651.9	781.8	800.5
1954/55	473.9	474.1	479.0	480.5	504.1	561.3	577.8
1955/56	516.8	517.0	521.6	523.1	547.5	613.6	629.9
1956/57	413.2	413.6	419.6	421.4	450.8	508.1	525.6

Fecha	Taibilla	La Esperanza	Argos	Alfonso XIII	La Cierva	Baños de Mula	Valdeinfierno (aguas abajo)
1957/58	574.7	575.4	588.2	591.8	625.9	685.4	704.8
1958/59	834.9	835.8	854.7	862.7	915.6	1041.6	1069.4
1959/60	986.0	986.5	1002.5	1005.4	1030.6	1079.2	1101.0
1960/61	661.9	662.3	669.3	670.7	685.6	722.9	736.9
1961/62	788.4	788.7	795.3	797.8	834.8	921.6	935.4
1962/63	1029.6	1029.9	1036.9	1039.2	1063.6	1119.7	1134.6
1963/64	795.7	795.9	801.5	802.9	818.2	862.3	874.1
1964/65	561.3	561.8	572.7	576.7	644.1	718.8	736.6
1965/66	747.5	747.8	754.3	756.1	774.6	815.7	836.7
1966/67	435.2	435.7	445.5	448.3	473.2	544.6	566.1
1967/68	363.4	363.8	372.0	374.9	404.1	475.1	497.1
1968/69	962.9	963.2	969.9	972.0	991.0	1069.3	1083.5
1969/70	777.8	778.4	790.6	796.4	846.8	1088.5	1113.2
1970/71	653.1	653.4	660.6	662.3	677.9	731.2	748.7
1971/72	832.2	832.9	845.4	849.3	878.1	969.5	996.7
1972/73	778.7	779.7	799.2	806.8	859.8	1006.1	1061.4
1973/74	594.7	595.3	604.1	607.3	644.7	806.3	827.4
1974/75	553.6	554.3	565.2	569.6	599.1	684.8	709.2
1975/76	487.8	488.3	497.5	501.0	531.6	637.1	653.6
1976/77	828.0	828.4	836.9	839.2	855.7	903.6	920.8
1977/78	858.0	858.3	864.3	866.1	880.1	926.4	941.1
1978/79	745.6	745.8	750.8	752.0	760.2	799.9	811.6
1979/80	709.1	709.8	720.8	725.8	749.5	844.9	876.1
1980/81	332.1	332.4	338.1	339.4	350.5	382.6	400.3
1981/82	431.8	432.0	436.5	437.4	444.8	479.5	491.5
1982/83	384.7	385.1	394.2	396.1	411.0	452.5	470.1
1983/84	508.8	509.1	513.8	514.8	524.6	570.4	582.9
1984/85	606.2	606.5	612.1	613.5	623.8	664.7	679.2
1985/86	621.2	621.5	626.7	628.0	639.3	690.4	703.1
1986/87	532.7	533.5	546.2	551.4	599.2	714.2	738.8
1987/88	778.1	779.0	798.3	804.4	844.4	908.5	984.5
1988/89	829.2	831.4	861.9	874.2	925.9	1088.3	1145.7
1989/90	955.3	956.0	972.5	976.9	1024.8	1235.4	1276.6
1990/91	591.3	591.7	598.2	600.3	623.8	712.3	736.7
1991/92	519.1	519.5	527.5	529.6	551.2	630.2	652.4
1992/93	405.3	405.6	412.9	414.9	434.0	512.4	532.7
1993/94	250.9	251.1	255.5	256.5	266.0	291.6	302.6
1994/95	210.7	211.0	216.1	217.4	228.5	265.6	276.9

Fecha	Taibilla	La Esperanza	Argos	Alfonso XIII	La Cierva	Baños de Mula	Valdeinfierno (aguas abajo)
1995/96	602.6	602.9	607.6	608.6	618.8	652.1	665.7
1996/97	789.5	790.0	798.5	801.0	824.0	925.2	945.9
1997/98	742.7	743.0	749.2	750.6	769.2	825.1	840.5
1998/99	368.4	368.8	375.6	378.1	396.2	438.6	451.8
1999/00	404.4	404.7	408.8	409.8	420.4	451.8	461.5
2000/01	649.4	649.8	658.0	660.8	691.5	774.8	796.9
2001/02	502.8	503.3	513.9	519.0	580.6	701.5	725.5
2002/03	521.2	521.4	526.6	528.1	544.8	581.1	594.4
2003/04	824.3	824.8	836.4	843.1	930.8	1073.9	1098.6
2004/05	374.1	374.3	379.8	381.8	407.7	447.3	463.1
2005/06	391.4	391.7	397.0	399.0	419.7	476.6	492.1
2006/07	541.3	541.7	553.2	557.3	599.0	712.9	728.4
2007/08	364.9	365.4	376.9	379.6	400.7	449.1	465.3
2008/09	969.7	970.3	981.5	985.8	1026.1	1124.4	1142.4
2009/10	1165.7	1166.8	1189.5	1196.2	1256.6	1437.1	1462.4
2010/11	826.1	826.5	834.8	838.0	869.1	926.4	933.6
2011/12	385.5	386.0	395.1	398.3	417.1	475.8	488.8
2012/13	1326.6	1326.8	1334.4	1336.5	1355.3	1415.8	1442.1
2013/14	624.8	624.9	626.9	627.2	631.4	658.1	667.9
2014/15	640.6	640.7	646.2	647.6	660.9	702.9	722.3
2015/16	426.3	426.4	429.0	429.4	436.0	459.7	469.9
2016/17	689.9	690.6	715.6	724.3	855.9	1126.7	1232.6
2017/18	713.8	714.0	719.4	720.9	736.6	781.3	805.6
MEDIA ANUAL	636.0	636.4	645.8	649.0	681.6	769.8	792.7
MÁXIMO	1326.6	1326.8	1334.4	1336.5	1355.3	1454.1	1539.1
MÍNIMO	210.7	211.0	216.1	217.4	228.5	265.6	276.9

Tabla 3. Series de aportaciones horizonte 2027.

## 4. SERIES DE APORTACIONES HORIZONTE 2039

Fecha	Taibilla	La Esperanza	Argos	Alfonso XIII	La Cierva	Baños de Mula	Valdeinfierno (aguas abajo)
1940/41	57.9	12.2	23.0	17.4	3.0	7.7	2.3
1941/42	38.5	8.4	20.6	14.9	2.7	8.4	2.2
1942/43	23.9	6.7	10.5	10.4	2.7	6.9	4.2
1943/44	32.5	20.4	26.6	35.5	17.8	38.1	20.3
1944/45	24.5	13.7	19.4	18.3	6.2	16.3	3.5
1945/46	51.1	37.4	48.1	50.9	12.4	40.8	15.7
1946/47	75.2	35.0	45.9	55.7	10.2	21.8	17.1
1947/48	70.4	19.6	36.8	58.0	6.1	13.1	24.1
1948/49	61.7	45.1	88.0	120.2	30.1	53.5	37.5
1949/50	31.7	13.8	22.9	23.7	8.5	17.5	7.1
1950/51	42.2	19.6	29.2	37.6	11.9	36.0	17.8
1951/52	51.8	15.9	26.6	25.9	6.2	17.2	22.1
1952/53	31.7	10.6	13.4	11.6	1.9	5.7	2.7
1953/54	39.4	23.5	53.2	51.0	11.5	28.2	11.9
1954/55	40.5	8.0	12.8	12.5	3.1	8.6	7.3
1955/56	41.1	12.1	19.6	16.2	4.0	9.5	3.8
1956/57	29.9	11.9	18.1	16.6	6.5	12.3	4.5
1957/58	41.6	15.9	26.5	22.0	5.0	13.1	6.7
1958/59	54.4	28.6	66.2	53.0	8.5	20.1	17.7
1959/60	72.5	15.0	34.9	26.0	2.7	7.5	5.0
1960/61	54.5	8.9	15.1	12.5	1.8	5.1	3.4
1961/62	48.8	19.1	76.1	57.1	5.2	17.1	16.6
1962/63	73.0	23.6	47.4	35.3	3.9	9.7	6.3
1963/64	57.0	14.6	76.9	50.3	2.5	6.0	5.2
1964/65	42.1	16.4	41.0	46.3	6.9	15.8	11.2
1965/66	54.7	13.8	17.0	14.4	2.9	6.7	2.8
1966/67	35.3	13.2	14.2	16.0	3.2	8.7	7.4
1967/68	24.5	10.2	14.1	15.2	3.8	10.9	5.5
1968/69	72.2	27.0	23.8	24.4	2.5	6.8	12.4
1969/70	64.7	22.3	29.2	38.2	8.9	22.9	31.7
1970/71	54.6	15.4	16.2	15.1	1.9	4.6	6.0
1971/72	66.4	23.4	28.9	28.8	5.2	10.7	13.3
1972/73	57.4	32.6	41.4	45.8	8.3	18.1	20.4
1973/74	48.3	21.6	26.6	34.0	8.0	17.4	34.0
1974/75	43.4	20.4	23.8	23.1	4.1	10.1	8.9

Fecha	Taibilla	La Esperanza	Argos	Alfonso XIII	La Cierva	Baños de Mula	Valdeinfierno (aguas abajo)
1975/76	33.1	18.0	20.6	23.3	5.8	12.1	8.9
1976/77	62.9	18.6	19.1	16.0	2.2	5.3	5.6
1977/78	62.3	13.9	14.3	12.6	2.3	5.2	3.9
1978/79	61.9	9.8	11.1	10.0	1.2	3.0	5.5
1979/80	52.1	21.6	21.2	20.7	3.4	7.3	9.1
1980/81	26.9	8.4	10.0	8.4	1.3	3.4	2.3
1981/82	37.2	12.8	15.5	12.8	1.1	2.6	4.4
1982/83	26.6	10.1	10.9	10.7	1.9	4.9	5.5
1983/84	40.6	7.9	11.9	10.8	1.4	3.3	5.0
1984/85	51.2	10.7	13.2	12.1	1.6	3.4	4.6
1985/86	53.0	10.9	13.4	11.7	1.7	4.0	6.9
1986/87	41.5	21.8	24.2	29.8	8.9	20.8	16.4
1987/88	50.9	35.9	29.1	29.8	6.1	12.8	3.6
1988/89	54.2	44.3	45.2	53.7	7.9	17.3	18.3
1989/90	65.0	54.9	70.2	82.3	12.6	22.0	37.7
1990/91	42.5	17.3	20.0	16.0	2.8	7.4	5.7
1991/92	35.8	23.3	23.0	20.8	3.7	7.6	8.3
1992/93	31.2	16.5	20.7	17.7	2.8	6.6	6.5
1993/94	18.5	5.6	7.8	6.8	1.1	2.9	1.9
1994/95	13.6	7.2	9.6	8.6	1.8	4.1	4.3
1995/96	49.0	14.0	15.2	13.0	1.6	3.6	2.8
1996/97	65.6	25.6	37.4	38.3	3.8	8.4	16.2
1997/98	63.2	18.6	28.1	25.0	3.7	7.5	8.8
1998/99	33.7	10.2	14.6	12.9	2.2	5.7	3.7
1999/00	33.3	12.3	14.7	12.3	1.7	3.9	4.8
2000/01	53.3	13.7	21.6	27.3	7.3	13.7	8.5
2001/02	39.2	17.4	25.8	33.8	8.9	27.6	19.3
2002/03	37.1	7.6	11.9	10.0	1.7	4.9	3.2
2003/04	54.7	27.7	32.6	39.7	10.3	37.8	22.7
2004/05	31.6	13.5	15.9	12.6	2.4	7.8	3.4
2005/06	30.2	9.8	12.0	11.6	2.7	6.9	5.7
2006/07	39.2	29.2	28.8	30.4	8.7	21.5	25.1
2007/08	27.8	13.7	14.0	12.6	3.0	7.8	5.8
2008/09	65.0	45.8	46.0	45.7	9.8	21.2	17.3
2009/10	86.6	64.7	69.1	80.6	12.6	29.9	38.7
2010/11	77.7	23.1	28.7	27.7	4.6	14.0	9.2
2011/12	34.6	12.2	13.1	15.0	2.1	6.3	7.4
2012/13	87.5	20.7	16.7	14.9	3.8	10.1	7.0

Fecha	Taibilla	La Esperanza	Argos	Alfonso XIII	La Cierva	Baños de Mula	Valdeinfierno (aguas abajo)
2013/14	52.1	15.8	12.8	8.7	0.3	1.3	3.7
2014/15	63.2	16.4	12.4	9.6	2.1	6.5	4.8
2015/16	42.1	12.4	10.0	6.8	0.6	2.6	3.3
2016/17	62.5	28.4	25.0	46.4	22.8	80.6	25.7
2017/18	51.5	16.7	14.0	12.0	1.1	5.8	5.0
MEDIA ANUAL	48.1	19.2	26.5	26.9	5.4	13.4	10.7
MÁXIMO	87.5	64.7	88.0	120.2	30.1	80.6	38.7
MÍNIMO	13.6	5.6	7.8	6.8	0.3	1.3	1.9
Fecha	Puentes (aguas abajo)	Los Carros	Talave (aguas abajo)	Camarillas (desagüe total)	Fuensanta (aguas abajo)	Cenajo (aguas abajo)	Almadenes
1940/41	9.1	26.0	123.4	174.7	306.2	455.0	695.9
1941/42	9.1	28.2	64.8	101.9	169.7	258.8	413.8
1942/43	14.0	28.1	41.1	68.8	106.1	162.1	265.7
1943/44	107.7	152.0	50.8	81.3	135.5	220.4	399.8
1944/45	17.6	57.8	45.2	73.3	97.2	163.7	299.2
1945/46	66.5	136.8	108.1	154.9	237.6	370.8	693.8
1946/47	59.3	93.5	153.8	219.0	360.9	552.6	938.3
1947/48	101.4	129.0	123.7	181.5	309.6	476.0	793.4
1948/49	173.9	245.5	91.3	147.4	181.6	344.3	791.2
1949/50	27.2	61.2	49.9	85.2	104.1	178.9	337.0
1950/51	62.4	112.0	103.2	149.8	241.4	354.3	608.6
1951/52	80.2	113.1	96.9	148.0	204.0	329.4	560.4
1952/53	9.0	22.5	45.9	78.8	107.3	182.8	307.0
1953/54	43.8	90.0	54.9	86.9	168.9	261.2	491.5
1954/55	20.5	38.1	61.9	91.2	195.5	282.5	413.8
1955/56	14.1	40.5	65.9	96.1	198.9	293.6	449.1
1956/57	15.8	36.5	47.9	77.4	140.3	214.9	350.3
1957/58	20.7	41.2	82.3	124.1	186.5	290.1	491.3
1958/59	45.4	83.1	109.9	170.3	209.2	360.2	707.4
1959/60	13.8	32.3	146.1	211.8	378.6	552.3	855.1
1960/61	10.8	25.9	100.6	153.3	247.3	370.1	569.3
1961/62	36.2	62.0	106.8	160.2	222.1	351.5	688.8
1962/63	17.9	40.1	161.0	225.0	359.0	549.6	904.9
1963/64	15.5	31.4	112.7	164.0	236.7	372.2	698.1
1964/65	29.7	51.8	72.0	112.3	150.0	249.4	479.8
1965/66	10.3	27.3	118.2	165.3	293.5	431.9	654.6

Fecha	Taibilla	La Esperanza	Argos	Alfonso XIII	La Cierva	Baños de Mula	Valdeinfierno (aguas abajo)
1966/67	22.0	49.0	56.2	94.1	128.7	216.5	366.0
1967/68	16.6	44.3	50.4	83.7	105.5	170.3	303.2
1968/69	39.5	55.5	144.6	199.9	371.9	548.0	846.4
1969/70	110.1	173.3	102.5	157.4	251.8	406.0	669.2
1970/71	18.9	37.9	86.9	131.4	245.4	374.3	565.5
1971/72	34.9	63.1	107.2	155.5	311.6	469.2	723.8
1972/73	58.3	91.1	98.0	157.2	204.9	360.9	662.9
1973/74	92.3	116.2	69.6	110.8	184.9	301.0	510.2
1974/75	24.6	56.6	68.0	108.8	167.5	277.0	468.6
1975/76	33.2	73.8	65.3	105.3	135.9	231.5	413.8
1976/77	14.6	32.2	121.5	173.9	320.3	479.5	723.4
1977/78	12.6	31.3	129.1	177.0	374.3	526.0	755.0
1978/79	15.4	27.7	113.7	156.3	320.0	462.0	659.0
1979/80	26.4	59.7	100.5	146.8	242.3	382.6	613.6
1980/81	7.0	20.9	45.8	78.3	99.2	167.3	280.6
1981/82	12.6	23.8	57.3	87.9	146.1	237.5	377.8
1982/83	13.6	28.9	50.7	87.4	119.7	191.6	319.7
1983/84	16.9	32.3	69.6	102.4	207.9	300.4	441.2
1984/85	14.9	27.3	78.0	114.4	251.2	368.0	528.3
1985/86	17.6	35.5	76.3	109.7	269.7	388.1	543.4
1986/87	48.3	77.0	56.4	101.0	148.4	255.1	447.8
1987/88	13.1	36.1	102.4	155.3	230.9	380.3	656.6
1988/89	56.6	118.3	104.4	160.6	191.7	348.0	694.7
1989/90	100.9	149.2	121.3	181.0	206.4	389.9	819.1
1990/91	18.0	53.4	93.7	142.5	184.4	299.7	510.3
1991/92	25.3	53.7	65.3	100.8	156.8	259.3	446.8
1992/93	20.1	51.8	48.6	78.0	115.6	197.3	344.2
1993/94	5.8	17.5	31.5	53.2	87.2	131.5	210.3
1994/95	13.2	26.3	24.7	44.7	59.3	97.5	173.6
1995/96	10.1	23.6	79.3	113.8	240.3	363.7	531.5
1996/97	41.2	82.2	94.8	142.9	250.4	413.2	680.8
1997/98	23.2	39.4	93.4	140.6	263.2	416.5	644.6
1998/99	11.2	28.8	44.5	75.4	112.0	192.4	315.5
1999/00	12.5	22.1	48.8	75.0	141.8	223.5	347.2
2000/01	29.6	54.4	74.4	103.6	272.1	389.6	566.0
2001/02	53.1	81.8	56.6	89.9	141.4	242.3	425.5
2002/03	10.3	24.5	72.5	104.6	223.3	312.1	453.8
2003/04	59.1	99.5	118.8	169.0	265.1	419.9	713.4



Fecha	Taibilla	La Esperanza	Argos	Alfonso XIII	La Cierva	Baños de Mula	Valdeinfierno (aguas abajo)
2004/05	10.9	25.6	56.2	97.1	81.5	168.3	318.8
2005/06	17.8	38.4	49.2	76.5	150.2	218.4	337.0
2006/07	61.4	105.9	79.2	117.5	177.4	291.5	517.3
2007/08	19.5	41.1	56.3	90.5	118.5	193.7	335.2
2008/09	46.5	88.9	148.2	204.0	380.9	572.9	945.4
2009/10	107.4	166.2	163.6	232.3	401.2	630.5	1120.5
2010/11	23.8	51.4	130.3	183.7	352.0	535.3	813.6
2011/12	26.8	51.5	55.7	88.6	146.9	228.6	366.7
2012/13	29.4	56.2	255.1	311.7	692.2	934.2	1316.0
2013/14	14.1	24.8	97.3	122.7	326.2	454.0	622.0
2014/15	20.7	38.8	95.1	126.2	308.3	457.5	632.6
2015/16	13.0	22.1	57.7	78.3	209.1	309.3	423.2
2016/17	102.3	241.1	104.0	155.6	211.0	386.9	663.3
2017/18	18.4	41.0	134.8	168.7	355.2	486.2	707.1
MEDIA ANUAL	34.6	63.1	87.7	129.8	220.6	342.1	560.6
MÁXIMO	173.9	245.5	255.1	311.7	692.2	934.2	1316.0
MÍNIMO	5.8	17.5	24.7	44.7	59.3	97.5	173.6
Fecha	Cieza	El Menjú	Abarán	Archena	Contraparada	Beniel	Guardamar
1940/41	713.2	713.6	721.3	723.6	739.4	773.4	789.1
1941/42	431.4	431.8	438.7	440.3	458.4	496.9	512.4
1942/43	283.0	283.4	290.4	292.7	310.3	347.5	365.4
1943/44	421.0	421.4	429.5	432.3	494.0	684.9	707.5
1944/45	313.3	313.5	318.6	321.0	353.4	428.8	443.4
1945/46	725.0	725.6	736.4	741.6	819.9	994.9	1023.4
1946/47	965.5	966.1	978.8	984.0	1028.6	1152.4	1189.5
1947/48	811.1	811.4	818.7	820.8	846.8	1008.0	1025.5
1948/49	828.5	829.2	842.3	847.0	949.4	1299.3	1375.5
1949/50	356.3	356.7	363.8	366.4	404.2	485.2	511.0
1950/51	638.6	639.5	657.2	665.4	741.5	880.7	911.8
1951/52	583.1	583.7	594.8	598.4	637.6	779.9	803.6
1952/53	322.6	322.8	329.4	331.2	346.5	376.3	391.8
1953/54	512.3	512.8	523.0	527.8	579.3	693.5	710.0
1954/55	427.0	427.2	431.6	432.9	451.9	502.5	517.1
1955/56	462.9	463.1	467.2	468.5	488.5	547.9	562.4
1956/57	367.3	367.6	373.0	374.6	399.8	451.2	466.7

Fecha	Taibilla	La Esperanza	Argos	Alfonso XIII	La Cierva	Baños de Mula	Valdeinfierno (aguas abajo)
1957/58	513.2	513.8	525.1	528.2	556.4	608.9	626.0
1958/59	747.4	748.2	765.0	772.0	815.9	928.6	953.3
1959/60	882.3	882.8	897.1	899.6	918.4	961.5	980.8
1960/61	589.3	589.6	595.8	597.1	608.2	641.2	653.6
1961/62	707.5	707.8	713.7	715.9	745.9	823.6	835.8
1962/63	922.7	923.0	929.3	931.3	949.1	999.1	1012.2
1963/64	714.1	714.3	719.3	720.5	731.2	770.3	780.8
1964/65	502.7	503.1	512.8	516.3	575.5	641.7	657.6
1965/66	671.2	671.5	677.3	678.8	692.4	728.8	747.2
1966/67	388.0	388.5	397.1	399.6	420.0	483.1	502.1
1967/68	325.2	325.5	332.8	335.4	360.2	423.8	443.5
1968/69	865.4	865.7	871.7	873.6	886.5	956.9	969.6
1969/70	694.4	694.9	705.7	710.8	752.6	964.7	986.5
1970/71	582.5	582.8	589.2	590.7	602.4	649.8	665.4
1971/72	746.5	747.1	758.3	761.7	783.9	865.0	889.0
1972/73	695.1	696.0	713.2	719.8	764.2	893.1	941.7
1973/74	531.1	531.6	539.5	542.3	573.4	715.2	733.9
1974/75	492.6	493.2	502.9	506.8	531.1	606.6	628.2
1975/76	433.7	434.1	442.3	445.4	470.7	563.7	578.3
1976/77	742.9	743.3	750.8	752.9	764.4	807.3	822.5
1977/78	769.9	770.2	775.5	777.1	786.2	827.0	840.0
1978/79	672.8	673.0	677.5	678.5	682.6	718.4	728.8
1979/80	635.2	635.8	645.8	650.3	669.0	755.6	783.6
1980/81	295.2	295.4	300.5	301.6	310.4	338.9	354.5
1981/82	389.9	390.1	394.1	394.9	399.5	430.7	441.4
1982/83	342.0	342.4	350.4	352.1	364.0	400.6	416.1
1983/84	454.9	455.1	459.3	460.2	467.0	507.4	518.5
1984/85	545.0	545.3	550.3	551.6	558.4	595.2	608.2
1985/86	557.9	558.2	562.8	564.0	571.4	616.8	628.0
1986/87	475.8	476.5	487.7	492.2	532.3	632.9	654.5
1987/88	695.0	695.8	713.0	718.4	750.8	807.6	874.4
1988/89	743.4	745.4	772.7	783.7	826.4	972.0	1022.9
1989/90	851.6	852.2	867.0	870.9	910.4	1096.3	1132.8
1990/91	529.7	530.0	535.8	537.7	556.7	637.2	659.1
1991/92	464.1	464.5	471.6	473.5	490.8	561.7	581.5
1992/93	362.5	362.8	369.3	371.2	386.8	457.8	475.9
1993/94	224.1	224.3	228.2	229.0	236.6	259.3	269.1
1994/95	187.6	187.9	192.3	193.5	202.6	235.3	245.3

Fecha	Taibilla	La Esperanza	Argos	Alfonso XIII	La Cierva	Baños de Mula	Valdeinfierno (aguas abajo)
1995/96	544.9	545.1	549.4	550.2	556.5	586.3	598.3
1996/97	705.5	705.9	713.5	715.8	733.1	822.4	840.8
1997/98	661.9	662.2	667.7	669.0	683.1	732.4	746.0
1998/99	329.5	329.8	335.9	338.2	352.8	390.7	402.5
1999/00	358.8	359.1	362.7	363.6	371.8	399.6	408.1
2000/01	582.0	582.4	589.6	592.1	616.6	689.5	709.0
2001/02	448.4	448.8	458.3	462.7	515.4	623.0	644.2
2002/03	468.3	468.5	473.1	474.4	487.3	519.7	531.5
2003/04	736.5	736.9	747.3	753.2	828.4	955.8	977.7
2004/05	333.8	334.1	338.9	340.7	362.5	397.7	411.7
2005/06	351.2	351.4	356.1	358.0	374.8	426.0	439.8
2006/07	541.3	541.7	553.2	557.3	599.0	712.9	728.4
2007/08	364.9	365.4	376.9	379.6	400.7	449.1	465.3
2008/09	969.7	970.3	981.5	985.8	1026.1	1124.4	1142.4
2009/10	1165.7	1166.8	1189.5	1196.2	1256.6	1437.1	1462.4
2010/11	826.1	826.5	834.8	838.0	869.1	926.4	933.6
2011/12	385.5	386.0	395.1	398.3	417.1	475.8	488.8
2012/13	1326.6	1326.8	1334.4	1336.5	1355.3	1415.8	1442.1
2013/14	624.8	624.9	626.9	627.2	631.4	658.1	667.9
2014/15	640.6	640.7	646.2	647.6	660.9	702.9	722.3
2015/16	426.3	426.4	429.0	429.4	436.0	459.7	469.9
2016/17	689.9	690.6	715.6	724.3	855.9	1126.7	1232.6
2017/18	713.8	714.0	719.4	720.9	736.6	781.3	805.6
MEDIA ANUAL	580.8	581.2	589.8	592.6	620.3	700.0	720.8
MÁXIMO	1326.6	1326.8	1334.4	1336.5	1355.3	1437.1	1462.4
MÍNIMO	187.6	187.9	192.3	193.5	202.6	235.3	245.3

Tabla 4. Series de aportaciones horizonte 2039.

## 5. SERIES DE APORTACIONES ACUEDUCTO TAJO SEGURA

Fecha	ATS Urbano	ATS Regadío	ATS Total
1980/81	112.0	351.9	463.9
1981/82	94.0	193.9	287.8
1982/83	94.0	193.9	287.8
1983/84	94.0	193.9	287.8
1984/85	104.3	269.3	373.6
1985/86	105.5	280.9	386.4
1986/87	96.0	211.2	307.2
1987/88	112.3	324.6	436.9
1988/89	107.7	330.9	438.6
1989/90	94.0	193.9	287.8
1990/91	94.0	193.9	287.8
1991/92	94.0	193.9	287.8
1992/93	94.0	193.9	287.8
1993/94	93.5	161.6	255.2
1994/95	92.1	58.7	150.8
1995/96	93.1	132.3	225.4
1996/97	101.3	259.8	361.1
1997/98	112.6	344.4	457.0
1998/99	95.7	206.8	302.5
1999/00	94.0	193.9	287.8
2000/01	104.3	269.3	373.6
2001/02	94.0	193.9	287.8
2002/03	96.9	216.0	312.9
2003/04	107.3	275.4	382.8
2004/05	94.0	193.9	287.8
2005/06	94.0	193.9	287.8
2006/07	93.5	159.8	253.3
2007/08	91.9	46.8	138.7
2008/09	92.8	106.4	199.2
2009/10	93.6	165.6	259.2
2010/11	94.0	193.8	287.8
2011/12	94.0	193.8	287.8
2012/13	94.0	193.8	287.8
2013/14	94.0	193.8	287.8
2014/15	93.9	187.3	281.2

Fecha	ATS Urbano	ATS Regadío	ATS Total
2015/16	93.2	138.6	231.8
2016/17	91.8	35.5	127.3
2017/18	92.2	64.4	156.6
Media	97.0	197.5	294.5
Máximo	112.6	351.9	463.9
Mínimo	91.8	35.5	127.3

**Tabla 5. Series de aportaciones ATS.**